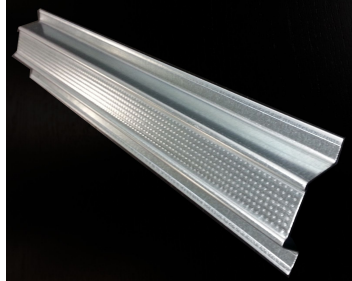


**PRODUCT NAME: FURRING 275F087-25 GAUGE EQ**

**PRODUCT ID: 250F087 - 15 Mils**



### PHYSICAL PROPERTIES (MIN)

Available Coating:	<b>G40 - G60 - G90</b>	Min Design Thickness:	<b>0.015 IN</b>
		Min Yield Strength Fy:	<b>50 KSI</b>
Web Depth:	<b>7/8" (0.875 IN)</b>	Weight:	<b>0.30</b>
Flange Height:	<b>1.25 IN</b>	<b>LB/LFT</b>	
		Area: (in <sup>2</sup> ):	<b>0.145</b>

### GROSS PROPERTIES

ASTM A653-11 Standard Specification for Steel Sheet, Zinc-Coated (Galvanized or Zinc-Iron Alloy-Coated (Galvannealed)) by the Hot-Dipped Process and ASTM C645-11a Standard Specification for Steel Nonstructural Steel Framing Members

### GROSS PROPERTIES

1. Calculated properties are based on AISI S100-12, "North American Specification for the Design of Cold-Formed Steel Structural Members."
2. The centerline bend radius is based upon inside corner radii shown in thickness.
3. Effective properties incorporate the strength increase from the cold work of forming as applicable per AISI A7.2.
4. Tabulated gross properties, including torsional properties, are based upon full-unreduced cross section of the studs, away from punchouts.
5. For deflection calculations, use the effective moment of inertia.
6. Allowable moment includes cold-work of forming.
7. Web depth for track sections is equal to the nominal stud width plus 2 times the design thickness plus the bend radius. Hems on nonstructural track sections are ignored.